

Dingle Partners



501/310 Flinders Lane MELBOURNE VIC

2 3 1

Experience luxury City Centre living at its finest in this exceptional and expansive apartment, spanning the entire 5th floor. This stunning two-bedroom, three-bathroom residence features an expansive and light-drenched living space with soaring ceilings, and windows to match, offering an unparalleled sense of space and privacy.

Accessed from the vibrant Melbourne laneway Bligh Place, at the corner of Flinders Lane, this apartment is one of only 13 in this exceptional 1914 building, providing both privacy and convenience. The contemporary entertainer's kitchen boasts a stunning marble island bench and breakfast bar, perfect for culinary enthusiasts and gatherings alike.

Each spacious bedroom includes its own ensuite, along with an additional powder room for guests, showcasing high-end fixtures that deliver a refined and stylish

Price : \$1,950,000 - \$2,100,000

View : <https://www.dinglepartners.com.au/sale/vic/inner-city/melbourne/residential/apartment/8173615>



Domenic Zanellini
0404878879



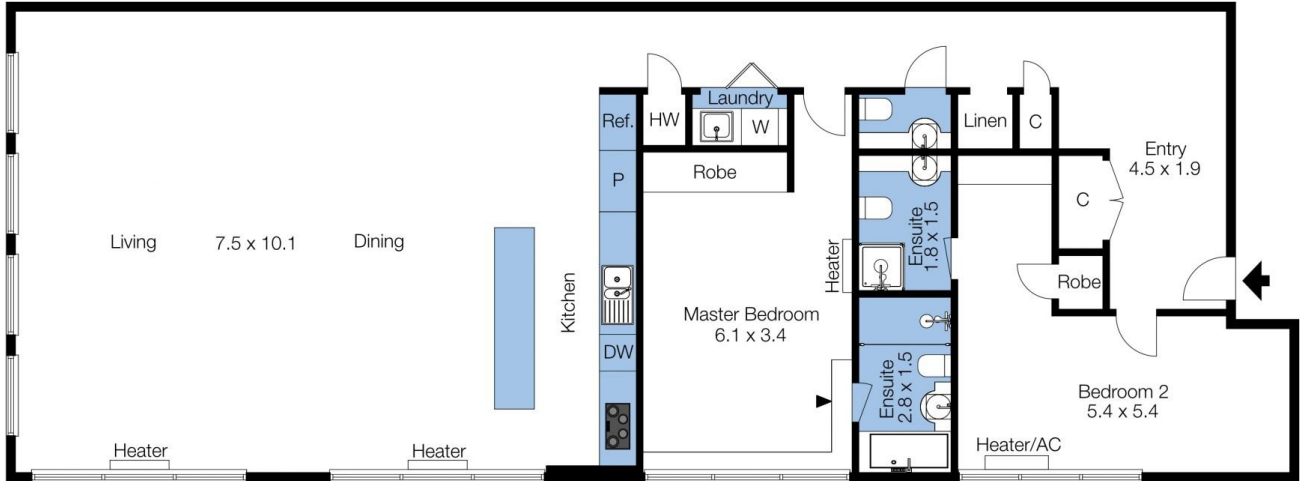
Daniel Barsegian
0493762684

<https://www.dinglepartners.com.au>

Dingle Partners, Real Estate, Sales, Melbourne, Buy, Sell, Property Management, leasing, rent, Richmond, Carlton, St.Kilda Rd, CBD, Auction, agent, house, apartment, tenant, landlord, owner



(Not In Position)



The floor plan is not to scale; measurements are indicative and in metres. Exterior elements are not in position. Plans should not be relied on. Interested parties should make and rely on their own enquiries.

Produced by DIAKRIT