




# Dingle Partners



## 1503/815 Bourke Street Docklands VIC

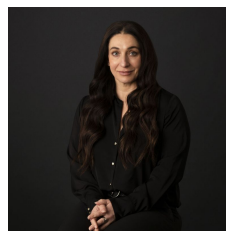
2  2  1 

This spacious two-bedroom corner apartment is situated within the thoughtfully designed and eco-friendly Serrata residential complex and is in a perfect location.

**Price** : \$700 pw

**View** : <https://www.dinglepartners.com.au/lease/vic/inner-city/docklands/residential/apartment/8171228>

This particular unit on the top floor of the building and is one of the largest two-bedroom apartments within the complex, offering an abundance of space and natural light. As you step through the entrance hallway, you'll find yourself in a welcoming open-plan living area. The galley kitchen is a highlight, featuring stone benchtops, modern stainless-steel appliances, and an electric oven and cooktop. Step out onto your own private balcony, where you can savour views of Victoria Green and the Docklands Community Garden plus view across Victoria Harbour and the CBD skyline. The master bedroom is a peaceful retreat, complete with a mirrored built-in robe and floor-to-ceiling windows plus a generous ensuite. The central bathroom



**Maria Gutterson**  
**+613 9614 6688**

<https://www.dinglepartners.com.au>

Dingle Partners, Real Estate, Sales, Melbourne, Buy, Sell, Property Management, leasing, rent, Richmond, Carlton, St.Kilda Rd, CBD, Auction, agent, house, apartment, tenant, landlord, owner