

Dingle Partners



1105/469 St Kilda Road MELBOURNE VIC

2 2 2

Welcome to this exquisite apartment located on the iconic, tightly held, Park Central and Melbourne's most famous boulevard, St Kilda Road. Boasting stylish finishes and an abundance of natural morning light, with cooler afternoons, this stunning property offers a perfect blend of comfort and elegance, making it an ideal urban retreat for couples, families and professionals alike.

The spacious open-plan living area flows seamlessly into a contemporary kitchen, with meals area and equipped with high-quality appliances and ample storage.

Enjoy your morning coffee on the private balcony while taking in the breathtaking views of the city skyline and surrounding parks to South Yarra.

The bedrooms are thoughtfully designed and ensure you

Price : \$1,390,000 - \$1,490,000

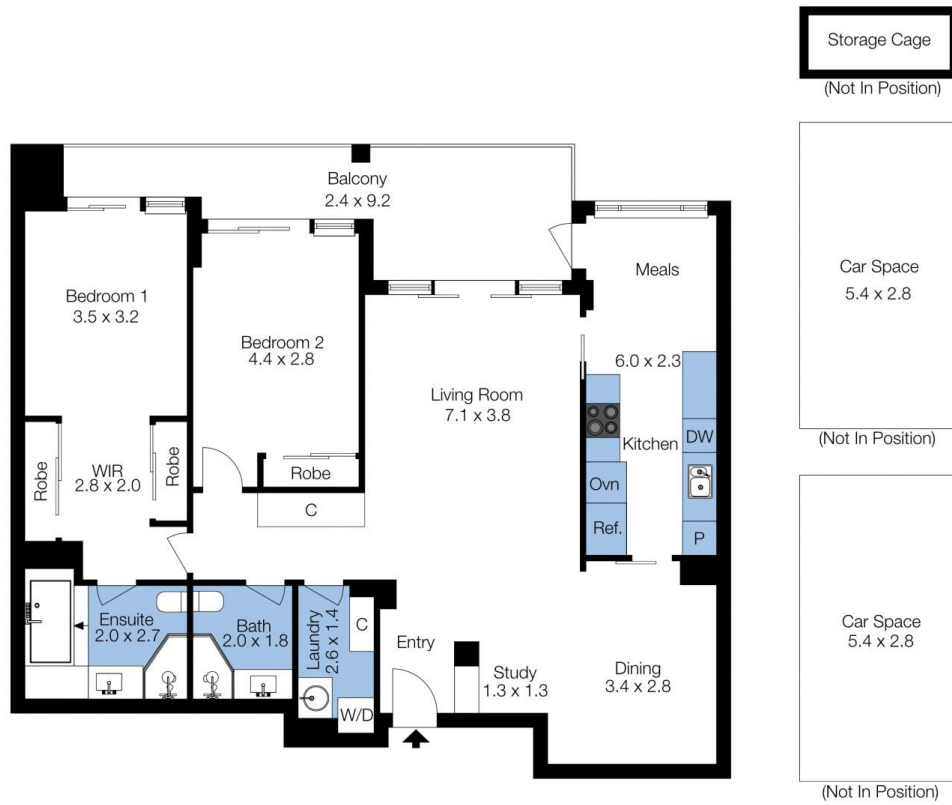
View : <https://www.dinglepartners.com.au/sale/vic/inner-city/melbourne/residential/apartment/8146815>



Domenic Zanellini
0404878879

<https://www.dinglepartners.com.au>

Dingle Partners, Real Estate, Sales, Melbourne, Buy, Sell, Property Management, leasing, rent, Richmond, Carlton, St.Kilda Rd, CBD, Auction, agent, house, apartment, tenant, landlord, owner



The floor plan is not to scale; measurements are indicative and in metres. Exterior elements are not in position. Plans should not be relied on. Interested parties should make and rely on their own enquiries.