

Dingle Partners



G5/380 Queensberry Street North Melbourne VIC

2  2  1 

Situated in one of the most sought after pockets of North Melbourne, this stunning contemporary apartment is only a 10 minute walk from the Melbourne CBD, Queen Victoria Market, public transport and parklands.

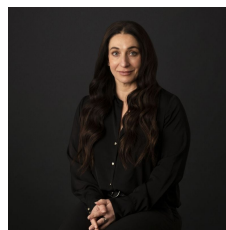
This apartment boasts a large open plan dining and living area, modern kitchen including stainless steel appliances, dishwasher and plenty of storage space.

Two generous sized bedrooms with BIR's (main with ensuite)

Features include split system heating and cooling, large undercover balcony ideal for entertaining as well as a glamorous roof top terrace with city views, and one secure basement car park.

Price : \$650 pw

View : <https://www.dinglepartners.com.au/lease/vic/inner-city/north-melbourne/residential/apartment/8140640>



Maria Gutterson
+613 9614 6688

--
Use this link to APPLY NOW! <https://our.property/dKxw>

<https://www.dinglepartners.com.au>

Dingle Partners, Real Estate, Sales, Melbourne, Buy, Sell, Property Management, leasing, rent, Richmond, Carlton, St.Kilda Rd, CBD, Auction, agent, house, apartment, tenant, landlord, owner