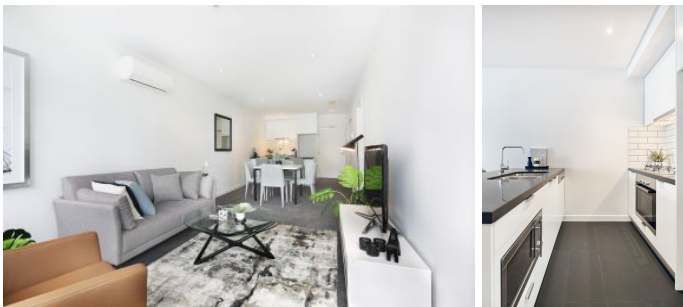


Dingle Partners



2704/250 City Road Southbank VIC

2  **1**  **1** 

Application Link: <https://our.property/dIGC>

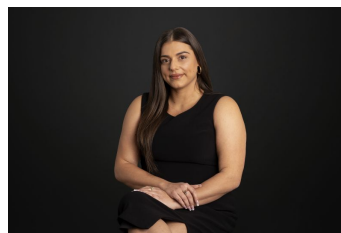
A stylish, modern, and open plan living space will welcome you as you enter this 2 bedroom beauty. Bathed in light through floor to ceiling windows, cherish views of the world's most liveable city, enjoy hot meals prepared in your modern kitchen and take pleasure in living in an apartment with plenty of space for a solitary resident or a couple.

This apartment is perfectly located in the heart of Southbank, it is very central to all key places in Melbourne, just minutes away from Crown Entertainment Complex, South Melbourne Market and Melbourne CBD. Public transport stops right at your doorstep.

Arranging an inspection is easy!

Price : \$650 pw

View : <https://www.dinglepartners.com.au/lease/vic/inner-city/southbank/residential/apartment/8136362>



Andrea Picone
+613 9614 6688

<https://www.dinglepartners.com.au>

Dingle Partners, Real Estate, Sales, Melbourne, Buy, Sell, Property Management, leasing, rent, Richmond, Carlton, St.Kilda Rd, CBD, Auction, agent, house, apartment, tenant, landlord, owner

bella

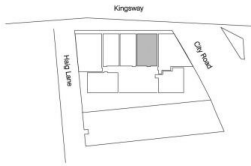
APARTMENTS

TYPE P

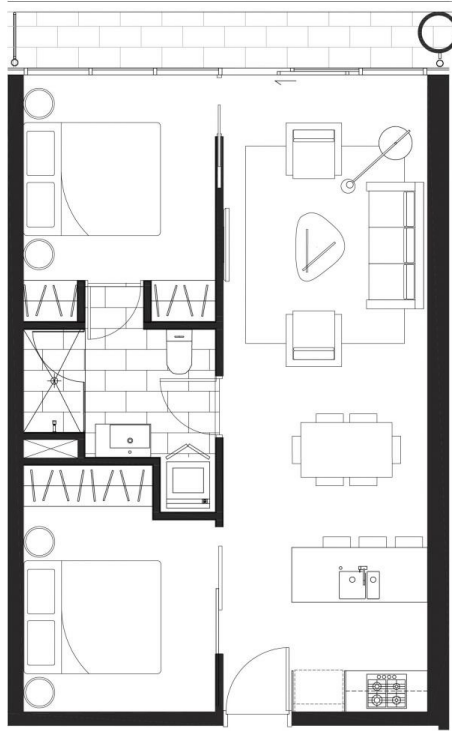
2 Bedrooms & 1 Bathroom

Apartment Area:	Internal	External
	59.5m ²	6m ²
Level:	14-33	

KEYPLAN



Levels 14 - 33



cronepartners



URBAN DESIGN
ARCHITECTS

SALVO PROPERTY GROUP

VERSION 4

PLEASE NOTE: Dimensions and areas are approximate and are subject to change without notice. Internal measurements are taken from centreline of party walls, external face of corridors and the external face of the outside walls. Prospective purchasers must rely on their own enquiries and should refer to Annexure 4 (Drawings and Specifications) of the Contract of Sale. Loose furniture, whitegoods and planters are not included. The type of floor finishes and the area to which floor finishes are applied may vary.