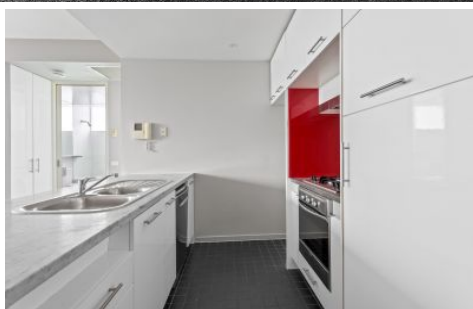


# Dingle Partners



## 804/225 Elizabeth Street Melbourne VIC

2  1 

Spacious, unfurnished 2 Bedroom, 1 bathroom apartment with large living, ducted heating and air-conditioning and located on the 8th floor of the popular NOVA building.

**Price** : \$570.00

**View** : <https://www.dinglepartners.com.au/lease/vic/inner-city/melbourne/residential/apartment/8120978>

The modern kitchen has stainless steel appliances with gas cooking (the usage cost for the gas is included in the rent) also including a dishwasher. Open plan living and dining.

Two bedrooms, both with built in robes and windows with a centrally located bathroom with bath and laundry within bathroom area.

This large corner apartment is located right in the center of the city close to all public transport and shopping.

To apply, please copy and paste the following link into your browser:



**Barbara Baltas**  
**0401953795**

<https://www.dinglepartners.com.au>

Dingle Partners, Real Estate, Sales, Melbourne, Buy, Sell, Property Management, leasing, rent, Richmond, Carlton, St.Kilda Rd, CBD, Auction, agent, house, apartment, tenant, landlord, owner