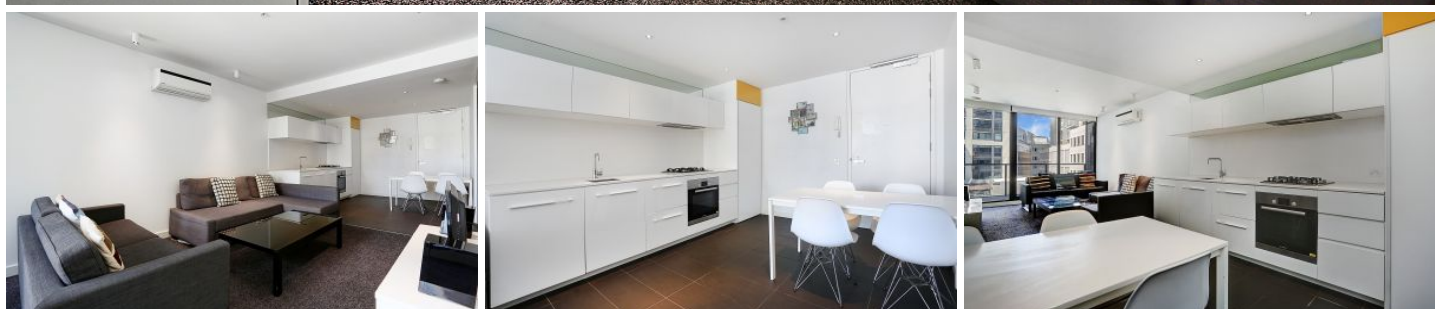


Dingle Partners



1417/35-47 Coventry Street Southbank VIC

1 1

Situated in Southbank, The Guilfoyle is ideally positioned in a quiet corner of this popular suburb. It is on the doorstep of the Royal Botanic Gardens, and Melbourne's famous boulevard St Kilda Road, Southbank's popular riverside cafes and Melbourne's arts and entertainment precinct, it is also close to the Clarendon Street shopping strip and South Melbourne Market.

View : <https://www.dinglepartners.com.au/lease/vic/inner-city/southbank/residential/apartment/8119720>

Public transport is literally less than a minute away on St Kilda Road, which provides easy access to Flinders Street Station and to the bay side suburb of St Kilda, which significantly reduces the need for a car.



Carson Mair
+613 9614 6688

Created by award winning developer and architects. Many apartments will enjoy northerly aspects towards the CBD, overlooking the heritage listed Victorian Army Barracks and the Royal Botanic Gardens.

<https://www.dinglepartners.com.au>

Dingle Partners, Real Estate, Sales, Melbourne, Buy, Sell, Property Management, leasing, rent, Richmond, Carlton, St.Kilda Rd, CBD, Auction, agent, house, apartment, tenant, landlord, owner