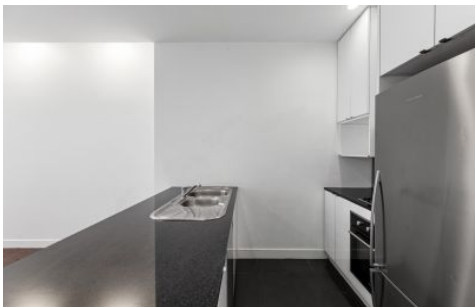


Dingle Partners



706/325 Collins Street Melbourne VIC

2  1 

Don't miss out on this fantastic apartment at The Mark' complex. In a convenient location with close proximity to QV, Melbourne Central, Emporium, public transport, Chinatown plus so much more.

Price : \$550.00 pw

View : <https://www.dinglepartners.com.au/lease/vic/inner-city/melbourne/residential/apartment/8108319>

Positioned on the 7th floor, open plan living/dining area with bountiful amounts of natural light. Modern kitchen with plenty of storage space, gas cook top, fridge and dish washer. Excellent sized bedrooms, 2nd room to be used as a guest room or study. Sparkling bathroom with mirror over vanity and laundry area.



Barbara Baltas
0401953795

The property includes brand new carpet.

Further benefits include security key entry with intercom, air-conditioning and heating and on-site building manager.

<https://www.dinglepartners.com.au>

Dingle Partners, Real Estate, Sales, Melbourne, Buy, Sell, Property Management, leasing, rent, Richmond, Carlton, St.Kilda Rd, CBD, Auction, agent, house, apartment, tenant, landlord, owner