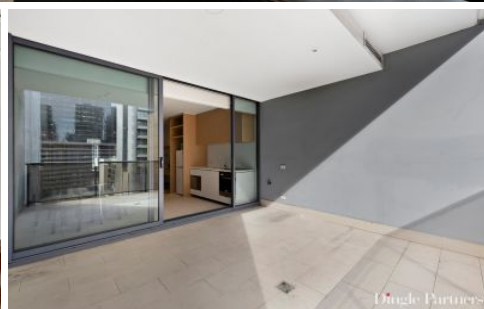
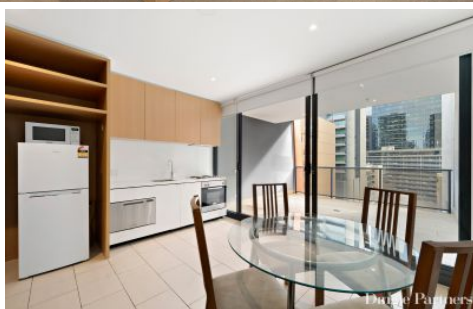


Dingle Partners



910/555 Flinders Street MELBOURNE VIC

1  1 

Spacious open plan designed apartment located on level nine of the popular Northbank Place Central Tower featuring a northerly Flinders Street front aspect and a large entertainers size balcony ideal for relaxed extended living. The position is totally convenient, with passing trams, close to Southern Cross & Flinders Stations, Southbank, Crown Entertainment Complex and a selection of eateries right out front. The open plan studio design has a designated bedroom area with provision to be curtained, and has mirrored built in robes. The living area includes a built in sideboard with shelving, adjoining tiled kitchen meals area, with floor to ceiling windows and sliding door out to the balcony. The stylish bathroom includes the laundry facilities. Additional features include heating & cooling, electric cooking, dishwasher, secure intercom entry, building manager, lift access and the apartment comes partly furnished.

Price : \$310,000 - \$330,000

View : <https://www.dinglepartners.com.au/sale/vic/inner-city/melbourne/residential/apartment/8097442>



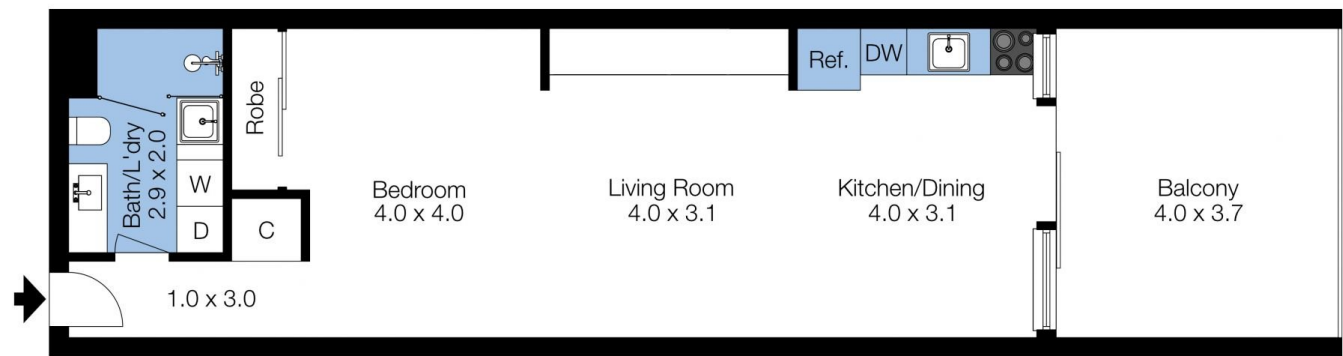
Robert Eggers
0412329340



Charles Tran
0412278987

<https://www.dinglepartners.com.au>

Dingle Partners, Real Estate, Sales, Melbourne, Buy, Sell, Property Management, leasing, rent, Richmond, Carlton, St.Kilda Rd, CBD, Auction, agent, house, apartment, tenant, landlord, owner



The floor plan is not to scale; measurements are indicative and in metres. Exterior elements are not in position. Plans should not be relied on. Interested parties should make and rely on their own enquiries.

Produced by **DIAKRIT**