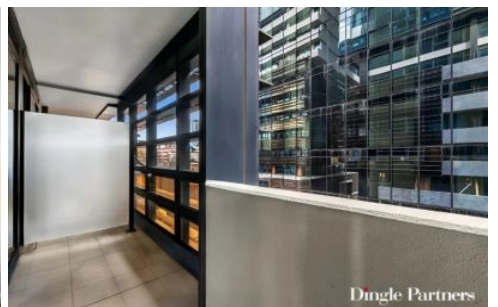


Dingle Partners



307/5 Sutherland Street MELBOURNE VIC

1 1

Delightful city apartment located in a vibrant Melbourne laneway neighborhood buzzing with cafes and restaurants, perfectly positioned close to Melbourne Central, QV shopping, RMIT University, Hardware Lane and Queen Victoria market.

This property comes fully furnished ready to move in or leased out for \$500 per week.

Apartment Features:

- Open-plan living and dining area
- Includes sofa couch, entertainment unit with TV & dining table set
- Bedroom with built in robe includes queen size bed.
- Stone kitchen benchtop with Miele gas cooktop and oven
- Includes refrigerator & microwave
- Sparkling bathroom with laundry includes washing

Price : \$299,000 - \$319,000

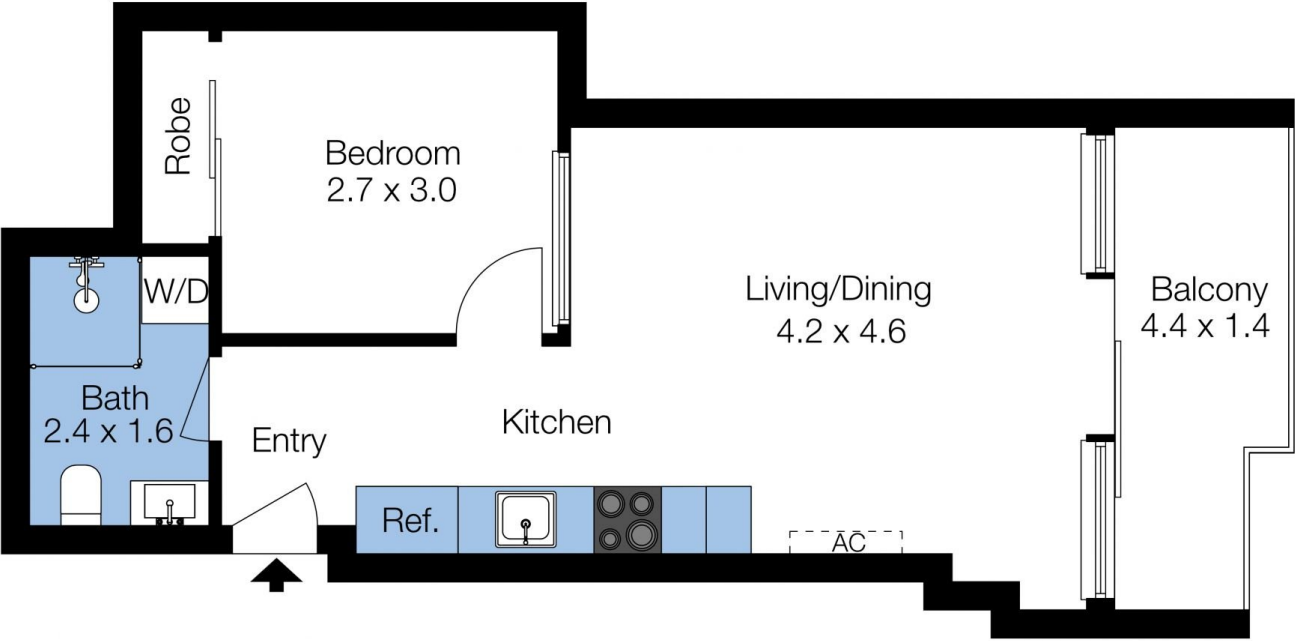
View : <https://www.dinglepartners.com.au/sale/vic/inner-city/melbourne/residential/apartment/8096367>



Charles Tran
0412278987

<https://www.dinglepartners.com.au>

Dingle Partners, Real Estate, Sales, Melbourne, Buy, Sell, Property Management, leasing, rent, Richmond, Carlton, St.Kilda Rd, CBD, Auction, agent, house, apartment, tenant, landlord, owner



The floor plan is not to scale; measurements are indicative and in metres. Exterior elements are not in position. Plans should not be relied on. Interested parties should make and rely on their own enquiries.

Produced by **DIAKRIT**