

## 501/250 City Road Southbank VIC

2  1 

A stylish, modern, and open plan living space will welcome you as you enter this 2 bedroom beauty. Bathed in light through floor to ceiling windows, cherish views of the world's most liveable city, enjoy hot meals prepared in your modern kitchen and take pleasure in living in an apartment with plenty of space for a solitary resident or a couple.

This apartment is perfectly located in the heart of Southbank, it is very central to all key places in Melbourne, just minutes away from Crown Entertainment Complex, South Melbourne Market and Melbourne CBD. Public transport stops right at your doorstep.

Arranging an inspection is easy!

To book a time to inspect, simply click on Book an Inspection Time or Email Agent to book instantly using our

**Price** : \$600 pw

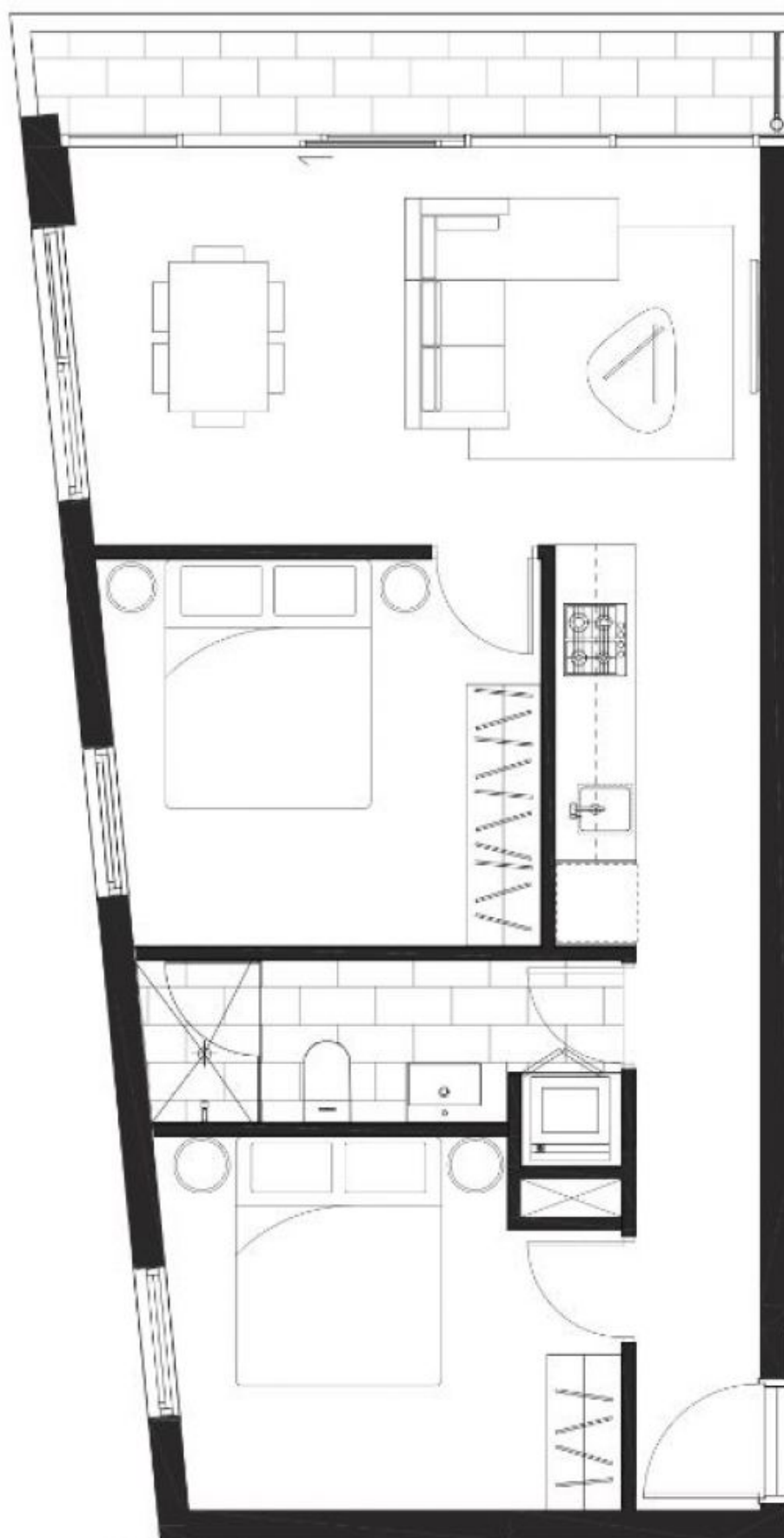
**View** : <https://www.dinglepartners.com.au/lease/vic/inner-city/southbank/residential/apartment/8082553>



**Samridhi Munjal**  
**+613 9614 6688**

<https://www.dinglepartners.com.au>

Dingle Partners, Real Estate, Sales, Melbourne, Buy, Sell, Property Management, leasing, rent, Richmond, Carlton, St.Kilda Rd, CBD, Auction, agent, house, apartment, tenant, landlord, owner



PLEASE NOTE: Dimensions and areas are approximate and are subject to change without notice. Internal measurements are taken to the center of the walls.