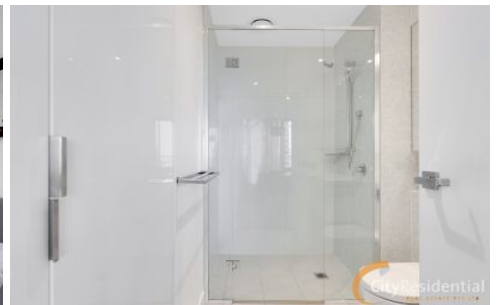


Dingle Partners



3008/231 Harbour Esplanade Docklands VIC

2  1  1 

Located in the sought after tower- The Quays, this outstanding 30th floor apartment is an absolute delight. It comprises two bedrooms with ample cupboard space, spacious living area with adjoining balcony, designer kitchen with stainless appliances including gas cook top and dishwasher, good size bathroom including large shower and euro laundry. Other extras include split system heating and cooling, intercom, quality fixtures, Foxtel and NBN, access to the amazing gymnasium, indoor heated pool, tennis court, and library. Ideally located in the heart of New Quay, walking distance to Trams, the Southern Cross Station, Harbour town, the CBD, and all that Docklands has to offer, great restaurants, cafes and weekend markets are just to name a few attractions for this area.

Sit on the amazing balcony and soak up the views of a night, while sipping your wine and winding down from your day. This one is not to be missed.

View : <https://www.dinglepartners.com.au/lease/vic/inner-city/docklands/residential/apartment/8080905>

<https://www.dinglepartners.com.au>

Dingle Partners, Real Estate, Sales, Melbourne, Buy, Sell, Property Management, leasing, rent, Richmond, Carlton, St.Kilda Rd, CBD, Auction, agent, house, apartment, tenant, landlord, owner