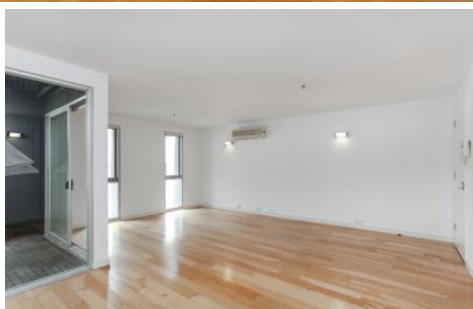


Dingle Partners



602/4 Bank Place Melbourne VIC

2 1

An absolute prime CBD position in one of Melbourne's most historic laneways this bright and spacious two bedroom apartment is a great place to call home. Centrally positioned just off Collins Street in Bank Place opposite the 'Mitre Tavern' close to trams and many choices of cafes and restaurants.

This light filled apartment features polished timber floors, spacious open plan living and dining opening to semi-enclosed balcony, modern kitchen with marble bench tops, dishwasher, airconditioning, both bedrooms have great storage with built-in robes, bathroom with large shower and marble top vanity. Includes intercom and secure lift access.

View : <https://www.dinglepartners.com.au/lease/vic/inner-city/melbourne/residential/apartment/8080778>



Barbara Baltas
0401953795

--
Click here to APPLY NOW! <https://our.property/d9lp>

<https://www.dinglepartners.com.au>

Dingle Partners, Real Estate, Sales, Melbourne, Buy, Sell, Property Management, leasing, rent, Richmond, Carlton, St.Kilda Rd, CBD, Auction, agent, house, apartment, tenant, landlord, owner