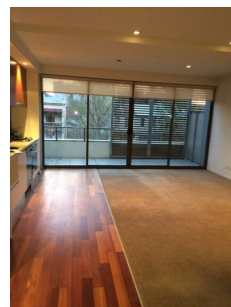
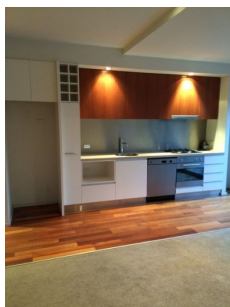
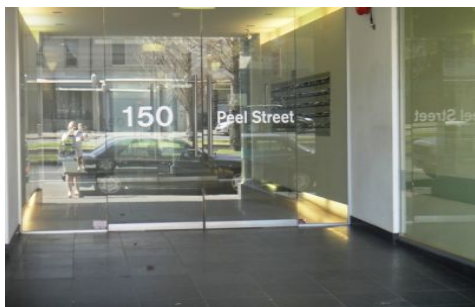


Dingle Partners



202/150 Peel Street North Melbourne VIC

1 1 1

This striking modern one bedroom apartment is situated in a fantastic location only minutes away from Queen Victoria market, Flag staff gardens and Melbourne Central. Comprising of a large lounge room and carpet throughout opening up onto your own private balcony. A gully style kitchen with stainless steel appliances including a dishwasher. A fantastic sized master bedroom with built in robes, a slick modern bathroom featuring a bath, European style laundry, study nook with cabling and remote control security parking.

Available now. Minimum lease of 12 months.

--

Click here to APPLY NOW! <https://our.property/hrl4>

View : <https://www.dinglepartners.com.au/lease/vic/inner-city/north-melbourne/residential/apartment/8080742>



Paola Faba
+613 9614 6688

<https://www.dinglepartners.com.au>

Dingle Partners, Real Estate, Sales, Melbourne, Buy, Sell, Property Management, leasing, rent, Richmond, Carlton, St.Kilda Rd, CBD, Auction, agent, house, apartment, tenant, landlord, owner