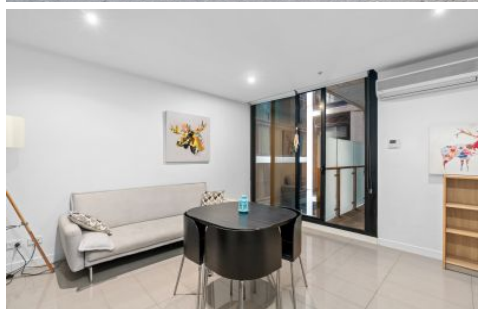


Dingle Partners



602/20-26 Coromandel Place Melbourne VIC

2 1

This stylish bohemian apartment complex is set in a secluded location in the heart of cosmopolitan Melbourne. Offering open plan living, fully equipped kitchen, central bathroom/laundry & small private balcony. Fully furnished for your convenience & just waiting for you to move in.

View : <https://www.dinglepartners.com.au/lease/vic/inner-city/melbourne/residential/apartment/8080739>

--
Click here to APPLY NOW! <https://our.property/d6F3>



Mona Wang
+613 9614 6688

<https://www.dinglepartners.com.au>

Dingle Partners, Real Estate, Sales, Melbourne, Buy, Sell, Property Management, leasing, rent, Richmond, Carlton, St.Kilda Rd, CBD, Auction, agent, house, apartment, tenant, landlord, owner