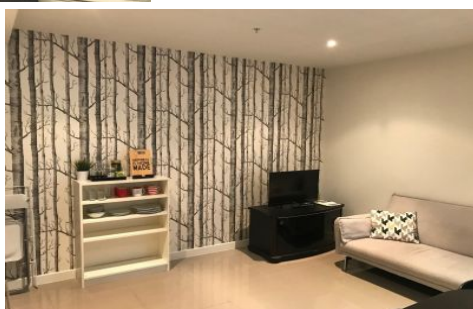


Dingle Partners



602/20-26 Coromandel Place MELBOURNE VIC

2 1

This stylish bohemian apartment complex is set in a secluded location in the heart of cosmopolitan Melbourne. Offering open plan living, fully equipped kitchen, central bathroom/laundry & small private balcony. Fully furnished for your convenience & just waiting for you to move in. Situated off a trendy lane off Lt Collins where cafes & local shops will offer endless choices.

Price : \$560 per week
View : <https://www.dinglepartners.com.au/lease/vic/inner-city/melbourne/residential/apartment/8051707>

Use this link to APPLY NOW! - <https://our.property/d6Gb>



Mona Wang
+613 9614 6688

<https://www.dinglepartners.com.au>

Dingle Partners, Real Estate, Sales, Melbourne, Buy, Sell, Property Management, leasing, rent, Richmond, Carlton, St.Kilda Rd, CBD, Auction, agent, house, apartment, tenant, landlord, owner