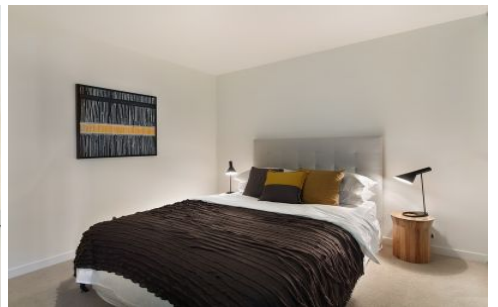


Dingle Partners



2302/45 Clarke Street Southbank VIC

2  **2** 

This spacious, one-bedroom apartment with its well-designed layout, generous living area and separate laundry is a rare find. All apartments in this building are beautifully designed and offer generous living areas, light-filled bedrooms and modern fittings and finishes in a stylish colour palette. Equipped with high quality appliances included, these apartments are a rare find in Melbourne's prime location.

View : <https://www.dinglepartners.com.au/lease/vic/inner-city/southbank/residential/unit/8037434>

Located on City Road in the heart of the Crown Precinct, rich in culture and entertainment, the Crown Precinct is home to Victoria's Crown Casino and Entertainment Complex, the Arts Precinct, Eureka Tower and a prestigious selection of fine restaurants, bars, cafés and night clubs. Melbourne's vibrant streets appeal to both locals and global travellers, making it a cultural focal point of Melbourne.

<https://www.dinglepartners.com.au>

Dingle Partners, Real Estate, Sales, Melbourne, Buy, Sell, Property Management, leasing, rent, Richmond, Carlton, St.Kilda Rd, CBD, Auction, agent, house, apartment, tenant, landlord, owner

