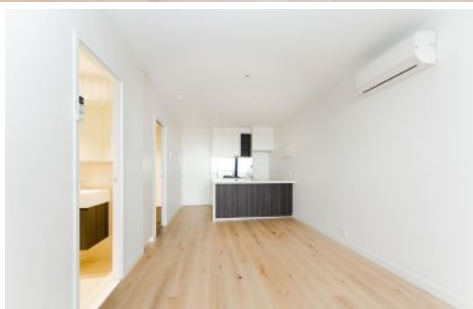


# Dingle Partners



**1507/245 City Road SOUTHBANK VIC**

**2  1 **

Enjoy the comforts of life when you move in to this 2 bedroom / 1 bathroom apartment. Lounge in your living area while looking out through floor to ceiling windows and gaze at the amazing views.

Step out and you are mere minutes away to an array of shopping, dining, sports and cultural events of the worlds most liveable city. Situated in the vibrant area of Southbank, Crown Entertainment Complex, South Melbourne Market, the CBD and Flinders Street Station are all a stones throw away. Public transportation will not be a problem with two tram lines operating in the area. Bask in the knowledge that you will be residing in an award-winning building.

The home of one of the highest indoor swimming pool in Melbourne and one of the largest vertical gardens in the world. Amenities include: 24 hour concierge, pool, gym, sauna and sky lounge. Woolworths caf & convenience food

**View :** <https://www.dinglepartners.com.au/lease/vic/inner-city/southbank/residential/apartment/8032598>

<https://www.dinglepartners.com.au>

Dingle Partners, Real Estate, Sales, Melbourne, Buy, Sell, Property Management, leasing, rent, Richmond, Carlton, St.Kilda Rd, CBD, Auction, agent, house, apartment, tenant, landlord, owner

