

Dingle Partners



704/60 Siddeley Street DOCKLANDS VIC

3  2  1 

704/60 Siddeley Street, Docklands

Flinders Wharf, an exclusive complex situated along the scenic Yarra River, mere steps from the vibrant waterfront promenade.

This exquisitely renovated 3-bedroom residence offering superior appeal boasts an expansive light filled northerly living and dining area with electric fireplace to get cozy by on the colder winter nights, or on the warmer summer days, bask in the glorious sunshine on the North facing balcony. The open plan living seamlessly blends into a pristine kitchen. The kitchen features a breakfast bar, stainless-steel appliances, stone benchtops, ample storage, and chic glass splash back.

The luxurious master bedroom has a walk-in dressing room leading to a designer bathroom, complete with both a bathtub and separate shower. Two additional bedrooms,

Price : \$888,000-\$950,000

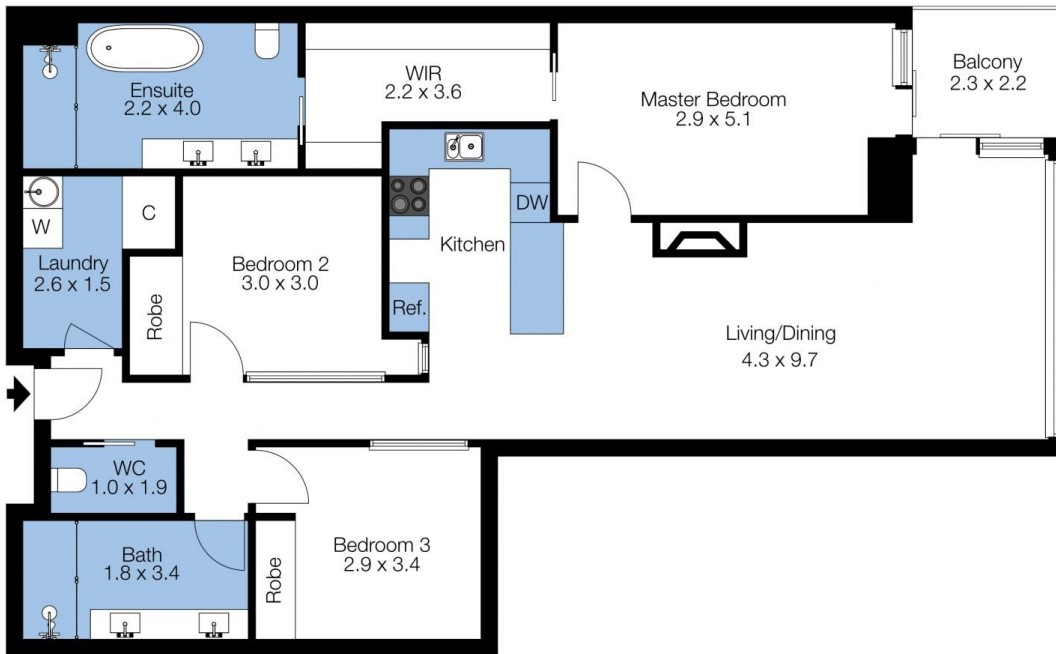
View : <https://www.dinglepartners.com.au/sale/vic/inner-city/docklands/residential/apartment/8032389>



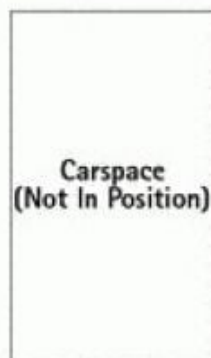
Maxine Thomson
0422036333

<https://www.dinglepartners.com.au>

Dingle Partners, Real Estate, Sales, Melbourne, Buy, Sell, Property Management, leasing, rent, Richmond, Carlton, St.Kilda Rd, CBD, Auction, agent, house, apartment, tenant, landlord, owner



The floor plan is not to scale; measurements are indicative and in metres. Exterior elements are not in position. Plans should not be relied on. Interested parties should make and rely on their own enquiries.



Every care has been taken to verify the accuracy of details in this brochure. All measurements are approximate and prospective purchasers are requested to take such action as is necessary to satisfy themselves of any pertinent matters.

Not to scale