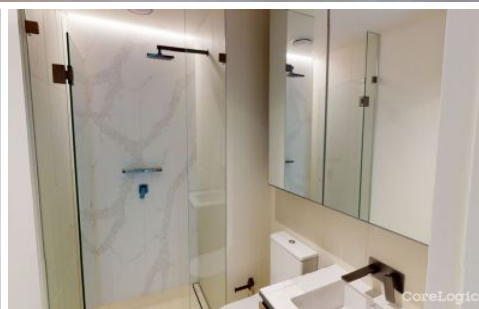
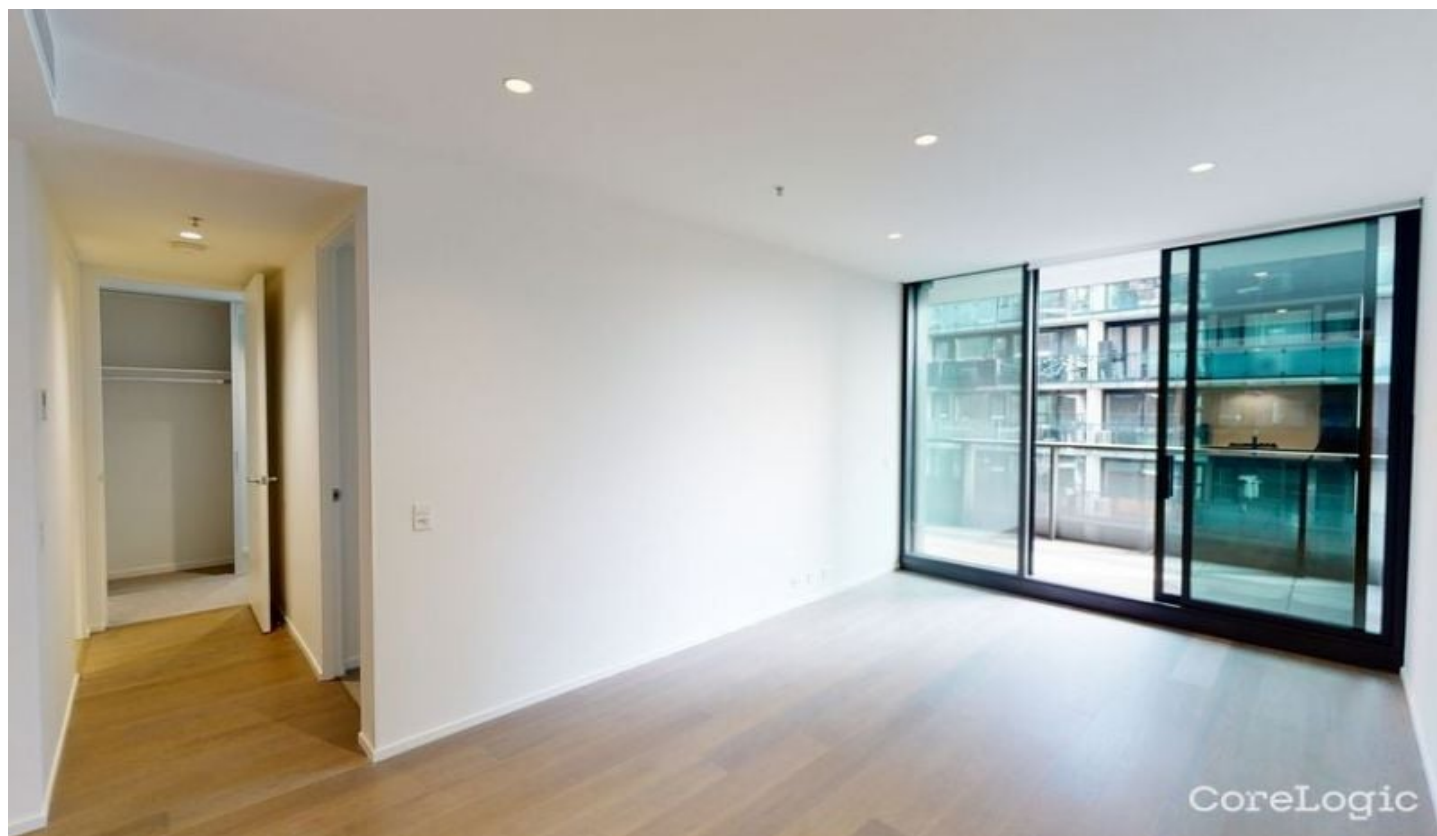


Dingle Partners



A405/627 Victoria Street ABBOTSFORD VIC

2  2  1 

This amenity-rich building with high-end apartments is only 3km from the CBD and nestled between the Yarra River & and Victoria Gardens shopping centre. With an abundance of cafes, restaurants, retail, parks, transport options, cycling & and walking paths, you'll enjoy the best of Abbotsford & Richmond.

Thoughtfully designed, this building is flooded with natural light, maximising the indoor and outdoor space. Providing an incredibly balanced lifestyle, you'll have a heated lap pool, gym, cinema, children's indoor playroom, residence lounge and library.

Your apartment features:

Sustainable 6+ Star Green Living Inside and Out

2 generous bedrooms with built in robes

2 designer bathrooms with stone tiling one with large bath

Superior kitchen with stone island benchtop and integrated appliances (Gaggeneau oven, gas stove top, and

View : <https://www.dinglepartners.com.au/lease/vic/inner-city/abbotsford/residential/apartment/7906286>

<https://www.dinglepartners.com.au>

Dingle Partners, Real Estate, Sales, Melbourne, Buy, Sell, Property Management, leasing, rent, Richmond, Carlton, St.Kilda Rd, CBD, Auction, agent, house, apartment, tenant, landlord, owner

THE
PARKHOUSE
 HARTSFORD



KEY

- FF Fireplace
- FF/Fridge/Freezer
- EW Washing Machine
- W Wardrobe
- L Laundry
- B Bathroom
- FF Floor Floor
- T Tile Floor
- C Carpet



APARTMENT TYPE

G20 2 Bed, 2 Bath

AREA

Internal	74.5m ²	801ft ²
External	34.4m ²	370ft ²
Total	108.9m²	1171ft²

APARTMENTS

ADR

RESIDENCE



LEVELS



Information on this page is for general information only. It is not intended to constitute an offer of any financial product or service. The information on this page is for general information only. It is not intended to constitute an offer of any financial product or service. The information on this page is for general information only. It is not intended to constitute an offer of any financial product or service.

CoreLogic