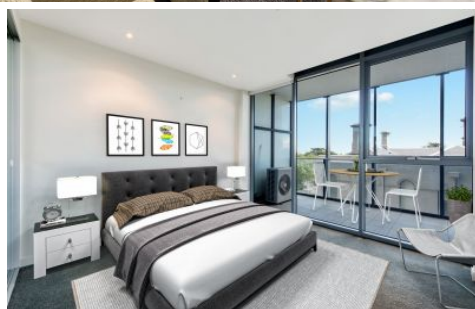
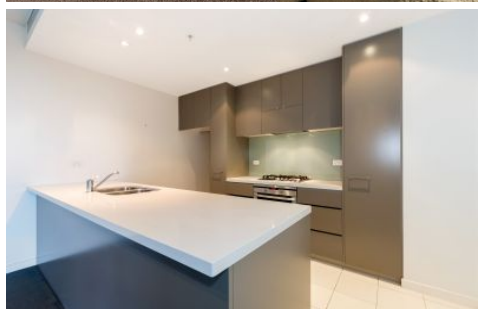


# Dingle Partners



**317/55 Queens Road Melbourne VIC**

2  1  1 

Situated at the intersection of Queens Road and Beatrice Street, Grosvenor on Queens enjoys a prime location in Melbourne. This expansive two-bedroom apartment offers the following features:

**View** : <https://www.dinglepartners.com.au/lease/vic/inner-city/melbourne/residential/apartment/7822788>

- Spacious open-plan living
  - Modern kitchen with an island bench
  - Bathroom with a shower over the bath
  - European laundry
  - Generously sized balcony with impressive views
- Grosvenor is conveniently located directly across from the stunning Albert Park Lake and golf course, the renowned venue for the Australian Formula 1 Grand Prix, and is only a short distance south of the Melbourne CBD. Scheduling an inspection is straightforward! To arrange a viewing, click on the Virtual Tour or Email Agent link and follow the provided prompts. Registering ensures that you will

<https://www.dinglepartners.com.au>

Dingle Partners, Real Estate, Sales, Melbourne, Buy, Sell, Property Management, leasing, rent, Richmond, Carlton, St.Kilda Rd, CBD, Auction, agent, house, apartment, tenant, landlord, owner