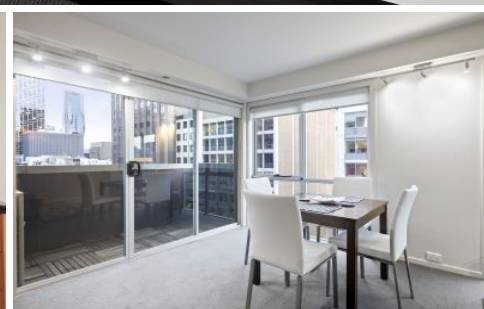


Dingle Partners



1405/325 Collins Street Melbourne VIC

1 1

This bright and sunny North/Westerly facing corner one bedroom apartment featuring Collins Street views and perfectly positioned on the 14th floor of the 'Mark' building close to Elizabeth Street in the center of the CBD.

View : <https://www.dinglepartners.com.au/lease/vic/inner-city/melbourne/residential/apartment/7797126>

The spacious open plan kitchen and living room has split system air conditioning, features large picture windows and opens to a good sized balcony. The double bedroom has built in robes, well appointed bathroom with large shower and laundry facilities.



Seona Kelly
+613 9614 6688

Well positioned in the business sector of the city with tram/train transport plus some of Melbourne's best shops and restaurants just moments from your door.

Use this link to APPLY NOW! - <https://our.property/6wfu>

<https://www.dinglepartners.com.au>

Dingle Partners, Real Estate, Sales, Melbourne, Buy, Sell, Property Management, leasing, rent, Richmond, Carlton, St.Kilda Rd, CBD, Auction, agent, house, apartment, tenant, landlord, owner